



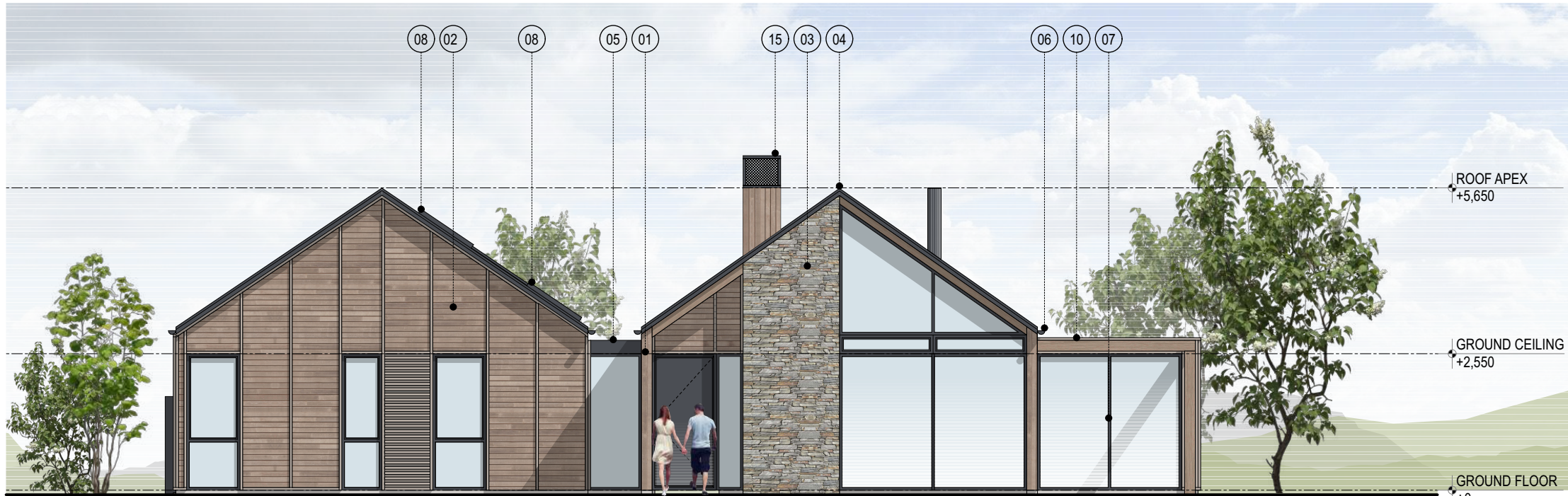
AREAS:

LIVING : 189.0m²
COVERED TERRACES : 48.5m²

PLAN: GROUND FLOOR
SCALE 1:100 AT A3

TPOLOGY 02 - THREE BEDROOMS
ALPINE ESTATE - WANAKA

- Information provided is for the purpose of a Site Feasibility and is subject to Council approval.
- Copyright of Design Concept + Documentation relating to this development remains with CoLab Architecture Ltd.



ELEVATION: 01
SCALE 1:100 AT A3



ELEVATION: 02
SCALE 1:100 AT A3

TPOLOGY 02 - THREE BEDROOMS
ALPINE ESTATE - WANAKA

MATERIALS KEY :

- 01 CEDAR CLADDING
19mm THICK VERTICAL SHIPLAP PROFILE
FINISH: SELECTED STAIN
- 02 CEDAR CLADDING
19mm THICK HORIZONTAL RUSTICATED PROFILE WITH MATCHING 40 x 50 CEDAR BATTENS
FINISH: SELECTED STAIN
- 03 SCHIST STONE WALLING
150mm THICK, LOCAL STONE
- 04 METAL STANDING SEAM ROOFING
0.55mm PRE-PAINTED STEEL 'CALDER STEWART' HERITAGE TRAY ROOFING SYSTEM
FINISH: SELECTED LOW SHEEN
- 05 MEMBRANE ROOFING
TPO MEMBRANE OVER 19MM THICK H3.2 TREATED PLYWOOD
COLOUR: GREY

ELEMENTS KEY :

- 06 ROOF ACCESSORIES
125mm PRE-PAINTED STEEL HALF ROUND SPOUTING WITH MATCHING PRE-PAINTED STEEL ROUND-SECTION DOWNPIPES
FINISH: SELECTED LOW SHEEN, TO MATCH ROOFING
- 07 ALUMINUM JOINERY
SELECTED THERMALLY BROKEN SUITE DOUBLE GALZED ALUMINIUM WINDOW AND DOOR JOINERY
FINISH: SELECTED POWDER COAT
- 08 ALUMINUM SKYLIGHT
SELECTED PROPRIETARY DOUBLE GALZED ALUMINIUM SKYLIGHT
FINISH: SELECTED POWDER COAT, TO MATCH ROOFING
- 09 ALUMINUM LOUVRES
SELECTED ALUMINIUM LOUVRE SYSTEM SUPPORTED BY PERGOLA FRAME
FINISH: SELECTED POWDER COAT
- 10 PERGOLA
SELECTED TIMBER PERGOLA FRAME
FINISH: SELECTED STAIN, TO MATCH CEDAR CLADDING
- 11 ROLLER SCREEN
SELECTED PROPRIETARY ROLLER SCREEN SYSTEM
COLOUR: TO BE SELECTED
- 12 SPA
SELECTED CEDAR SPA POOL
- 13 FIRE
BURTON EXTERIOR WOOD FIRE COMPLETE WITH BUILT IN WOOD STORES
WOOD FIRE STEEL COMPONENTS FINISH: BLACK, LOW SHEEN
HOUSING FINISH: TO BE SELECTED
- 14 BBQ
SELECTED PROPRIETARY BBQ COMPLETE WITH SINK AND BAR REFRIGERATOR
FINISH: STAINLESS STEEL
- 15 CHIMNEY COWL
50 x 50 STEEL FRAME WITH PERFORATED METAL SHEETING TO SIDES TO COWL
FINISH: SELECTED POWDER COAT, TO MATCH ROOFING
- 16 GAS WATER HEATER
SELECTED GAS CALIFONT WATER HEATER WITH EXTERIOR HOUSING
FINISH: SELECTED POWDER COAT, TO MATCH JOINERY
- 17 CLOTHESLINE
SELECTED WALL MOUNTED CLOTHESLINE

- Information provided is for the purpose of a Site Feasibility and is subject to Council approval.

- Copyright of Design Concept + Documentation relating to this development remains with CoLab Architecture Ltd.



ELEVATION: 03
SCALE 1:100 AT A3



ELEVATION: 04
SCALE 1:100 AT A3

TPOLOGY 02 - THREE BEDROOMS
ALPINE ESTATE - WANAKA

MATERIALS KEY :

- 01 CEDAR CLADDING
19mm THICK VERTICAL SHIPLAP PROFILE
FINISH: SELECTED STAIN
- 02 CEDAR CLADDING
19mm THICK HORIZONTAL RUSTICATED PROFILE WITH MATCHING 40 x 50 CEDAR BATTENS
FINISH: SELECTED STAIN
- 03 SCHIST STONE WALLING
150mm THICK, LOCAL STONE
- 04 METAL STANDING SEAM ROOFING
0.55mm PRE-PAINTED STEEL 'CALDER STEWART' HERITAGE TRAY ROOFING SYSTEM
FINISH: SELECTED LOW SHEEN
- 05 MEMBRANE ROOFING
TPO MEMBRANE OVER 19MM THICK H3.2 TREATED PLYWOOD
COLOUR: GREY

ELEMENTS KEY :

- 06 ROOF ACCESSORIES
125mm PRE-PAINTED STEEL HALF ROUND SPOUTING WITH MATCHING PRE-PAINTED STEEL ROUND-SECTION DOWNPIPES
FINISH: SELECTED LOW SHEEN, TO MATCH ROOFING
- 07 ALUMINUM JOINERY
SELECTED THERMALLY BROKEN SUITE DOUBLE GALZED ALUMINIUM WINDOW AND DOOR JOINERY
FINISH: SELECTED POWDER COAT
- 08 ALUMINUM SKYLIGHT
SELECTED PROPRIETARY DOUBLE GALZED ALUMINIUM SKYLIGHT
FINISH: SELECTED POWDER COAT, TO MATCH ROOFING
- 09 ALUMINUM LOUVRES
SELECTED ALUMINIUM LOUVRE SYSTEM SUPPORTED BY PERGOLA FRAME
FINISH: SELECTED POWDER COAT
- 10 PERGOLA
SELECTED TIMBER PERGOLA FRAME
FINISH: SELECTED STAIN, TO MATCH CEDAR CLADDING
- 11 ROLLER SCREEN
SELECTED PROPRIETARY ROLLER SCREEN SYSTEM
COLOUR: TO BE SELECTED
- 12 SPA
SELECTED CEDAR SPA POOL
- 13 FIRE
BURTON EXTERIOR WOOD FIRE COMPLETE WITH BUILT IN WOOD STORES
WOOD FIRE STEEL COMPONENTS FINISH: BLACK, LOW SHEEN
HOUSING FINISH: TO BE SELECTED
- 14 BBQ
SELECTED PROPRIETARY BBQ COMPLETE WITH SINK AND BAR REFRIGERATOR
FINISH: STAINLESS STEEL
- 15 CHIMNEY COWL
50 x 50 STEEL FRAME WITH PERFORATED METAL SHEETING TO SIDES TO COWL
FINISH: SELECTED POWDER COAT, TO MATCH ROOFING
- 16 GAS WATER HEATER
SELECTED GAS CALIFONT WATER HEATER WITH EXTERIOR HOUSING
FINISH: SELECTED POWDER COAT, TO MATCH JOINERY
- 17 CLOTHESLINE
SELECTED WALL MOUNTED CLOTHESLINE

- Information provided is for the purpose of a Site Feasibility and is subject to Council approval.

- Copyright of Design Concept + Documentation relating to this development remains with CoLab Architecture Ltd.



ARTIST'S IMPRESSION: VIEW OF ENTRY DOOR AND FRONT YARD

TPOLOGY 02 - THREE BEDROOMS
ALPINE ESTATE - WANAKA

- Information provided is for the purpose of a Site Feasibility and is subject to Council approval.
- Copyright of Design Concept + Documentation relating to this development remains with CoLab Architecture Ltd.



ARTIST'S IMPRESSION: VIEW OF TERRACES, DECK AND BACK YARD

TPOLOGY 02 - THREE BEDROOMS
ALPINE ESTATE - WANAKA

- Information provided is for the purpose of a Site Feasibility and is subject to Council approval.

- Copyright of Design Concept + Documentation relating to this development remains with CoLab Architecture Ltd.